

Site safety introduction for drivers of packed goods.



WELCOME

The INEOS site is a SEVESO company. Every visitor must formally register.

Safety is our number 1 priority. In case of doubt or dangerous situations, stop immediately!

Please read this presentation with safety rules carefully. A test follows at the end. A positive result is valid for 1 month.

LIFE SAVING RULES (LSR)

INEOS has 7 Life Saving Rules. The following is strictly prohibited:

- ⊘ Working at height without suitable fall protection.
- ⊘ Being under the influence of alcohol or drugs.
- ⊘ Smoking unless in the designated places.
- ⊘ Entering confined spaces.
- ⊘ Entering the danger zone during lifting work.
- ⊘ Working on installations without permission.
- ⊘ Bypassing safety devices or interlocks.

Any breach is life-threatening. Every finding leads to a permanent access ban.



LIFE SAVING RULES (LSR)



⊘ Working at height without suitable fall protection.



Open side: use pallet truck not allowed



Open side: use forklift



Open side: use stairs



Climbing on cargo is not allowed

LIFE SAVING RULES (LSR)



⊘ Working at height without suitable fall protection.



Tail lift: wrong use of pallet truck



Tail lift: correct use of pallet truck



Loading dock with wheel chock or wheel lock



Climbing to the top is not allowed

LIFE SAVING RULES (LSR)



⊘ Working at height without suitable fall protection.

Practical:

- ⊘ Climbing to the top of your vehicle is strictly forbidden.
- ⊘ Climbing on the load is strictly forbidden.
- ⊘ The use of a pallet truck with open curtain sides is prohibited.
- ✓ Use a pallet truck to pull in or push out the goods. Handling the goods with your backside to the open end of the tail lift is not allowed.
- ✓ Use wheel chocks when loading or unloading via a loading dock.
Request permission to enter the loading floor. (hazard of collision with forklift truck)
- ✓ Use stairs to manipulate straps and shelves that are out of reach.
- ✓ Only enter the loading floor in a safe manner. Use a staircase.

LIFE SAVING RULES (LSR)



- ⊘ Being under the influence of alcohol or drugs.
- ⊘ Smoking unless in the designated places.

Practice:

- ⊘ Having on board, having in possession, using or being under the influence of alcohol or drugs is prohibited.
- ⊘ Smoking on the site is prohibited. There is an exception to specifically designated locations.
- ⊘ Smoking in your vehicle is also prohibited.



LIFE SAVING RULES (LSR)

Below again all 7 Life Saving Rules. Strictly prohibited:

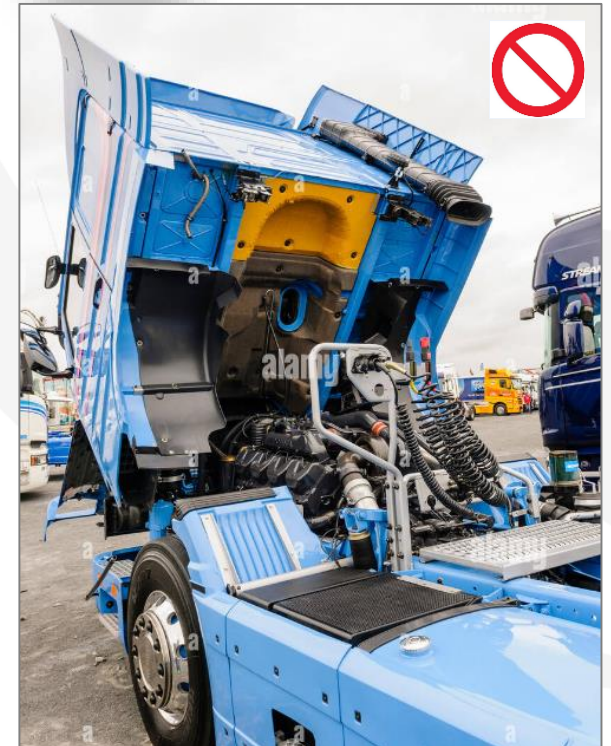
- ⊘ Working at height without suitable fall protection.
- ⊘ Being under the influence of alcohol or drugs.
- ⊘ Smoking unless in the designated places.
- ⊘ Entering confined spaces.
- ⊘ Entering the danger zone during lifting work.
- ⊘ Working on installations without permission.
- ⊘ Bypassing **safety devices** or interlocks.

Any breach is life-threatening. Every finding leads to a permanent access ban.



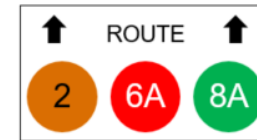
General safety rules

- ❌ The use of electronics is prohibited in the production areas. These areas are marked by orange lines and include all (un)loading stations of chemical products. The rule also applies inside your vehicle when parked in an orange zone.
- ❌ Photography is prohibited throughout the site.
- ❌ Operating loading or unloading installations is prohibited. (e.g. loading arm, cage, stairs, ...)
- ❌ Working on your vehicle is only allowed after approval from Ineos.



General safety rules

- The maximum speed on the site is 20km/h.
- Wearing a seat belt is mandatory.
- There is a circulation plan for heavy traffic. Always follow the specified route.



Personal protective equipment (PPE's)

- Area's with increased operational and chemical risks are marked by an **orange line**. This applies to all loading stations for chemical products. Basic PPE's (personal protection equipment) are mandatory.

- Safety helmet
- Safety glasses
- Safety shoes
(forbidden: open or flat stepped rear)
- Antistatic fire protection work clothes
(forbidden: short sleeves or short trouser legs)
- Working gloves



Emergency measures

- Fire alarm: (= ascending tone)
 - Clear the way for emergency services.
 - Stop the engine.
 - Wait in your vehicle for instructions.
- Evacuation alarm? (= waving tone)
 - Immediately walk to the evacuation point.
 - Move perpendicular to the wind direction.
 - Do not forget to sign out.

Study the route plan regarding evacuation points later!
- End alarm? (= continuous tone):
 - Traffic may be resumed.



Emergency measures

- Always call for help in an emergency:
 - Speak to an INEOS operator or employee
 - Alarm call points (Red hotlines, telephone without keys).
 - Internal telephone number '555'.
 - External telephone number +32 (0) 3 250 95 55
- Any injury should be taken care of in the medical service.



Summary:

1. Safety first. When in doubt, stop.
2. Alcohol and drugs are prohibited.
3. Smoking is prohibited, even in the cabin.
4. Work safely at height. Never climb on your load.
5. Always wear the right PPEs.
6. Follow the specific instructions at the charging location.

We wish you a nice and safe visit!