

# A Bag In Box container slid from the chassis during tipping



## Logistics SHE Alerts

### what

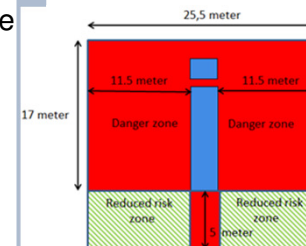
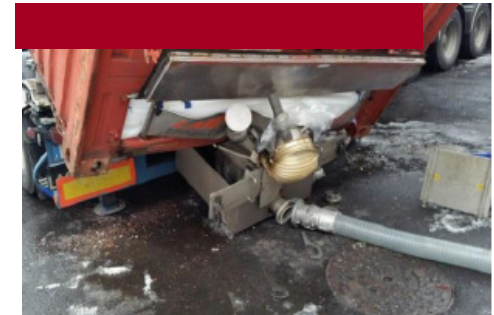
- During the tipping, a BIB container suddenly slid approximately 0,5 m from the rear of the chassis.
- The movement stopped as both the delivery equipment hit the ground and the underside of the container became stuck/wedged on the chassis. This punctured the fibre glass floor of the container but did not breach the inner floor of the container or liner.
- No one became injured.
- 50 kg of product were spilled

### why

- The incident was caused because the driver had failed to engage and to check the twist locks. This caused the container to slide over the top of the twist lock mushrooms.
- On the delivery checklist, the driver had indicated that he had done the checks which was not the case.
- The driver had applied an incorrect sequence of lifting and activation of the rotary valve as he had started the tipping before activating the rotary valve. As the rotary valve was not yet powered, the amount of product spilled remained very low.

### learning

- Before tipping, it must be checked that all twist locks are engaged and secured in locked position. Preferably, there should be a cross check by a site representative.
- Although the chassis was fitted with heel plates, these did not prevent the container to slide back and off the rear.
- Drivers must remain outside the danger zone while tipping.
- Ineos O&P have made the installation of twist lock indicators on tipping chassis mandatory as from mid next year.



Twist lock with heel plate

10

12

20  
14