

## Ineos Haulier Safety Event

21 November 2019

**The digital EFTCO Cleaning Document or eECD  
and future ECLIC USE CASES**

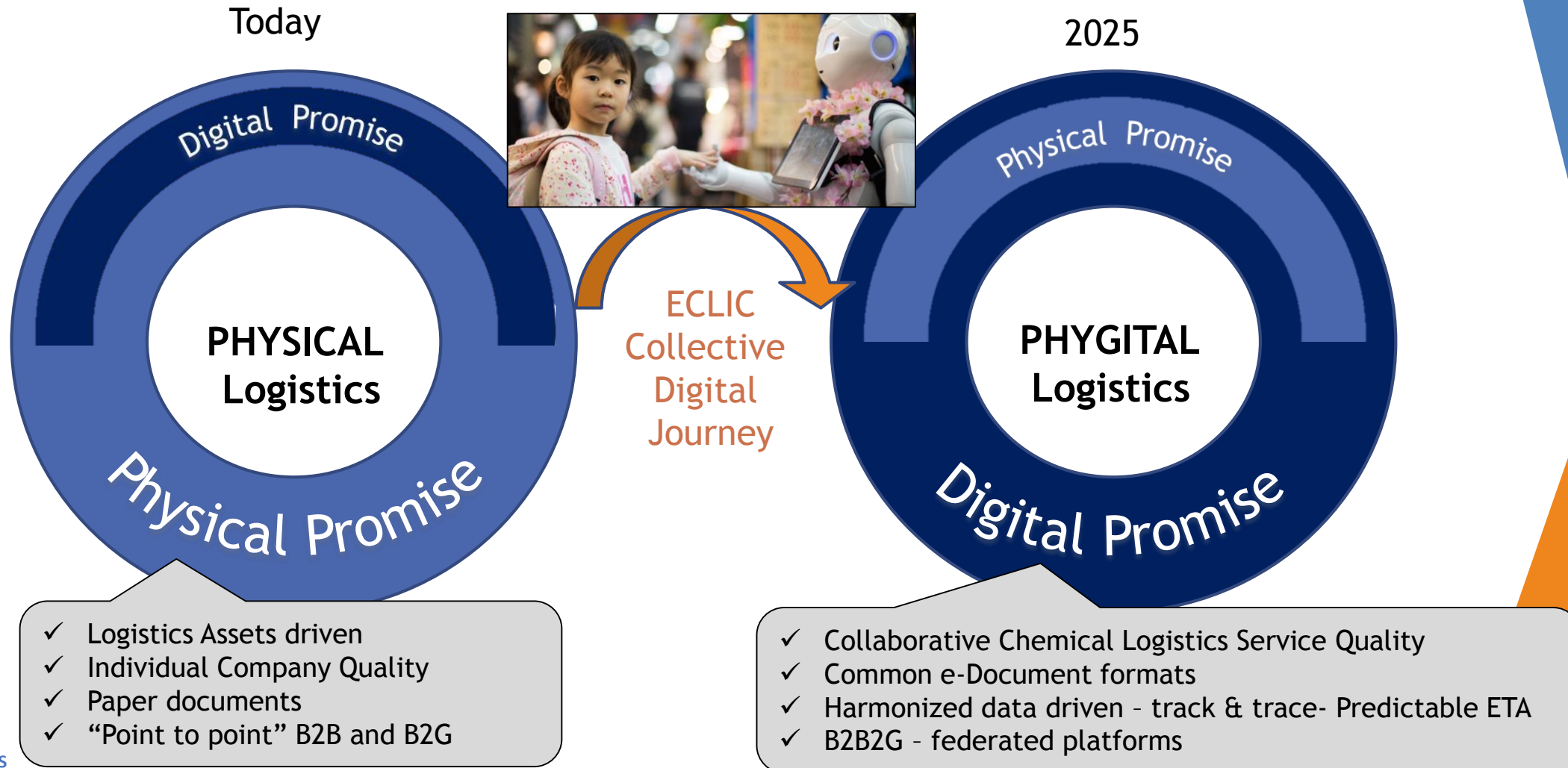
# Chemical logistics leaders in 2025: “Running our supply chain processes only on paper is like running blind”



The digital change happens today...!!

# “Chemical Supply Chains to become “PHYGITAL”

“Phygital Chemical Logistics” to meet new customer expectations





**EFTCO** European Cleaning Document **BE Unique Numbering** Logo national organisation

# ECD

1 Customer reference number / national language

2 Customer / national language

3 Serial number / national language

4 Identification numbers / national language  
Vehicle / national language

5 Tank, Container / national language

6 Nature of product\* / national language

7 Next load\*\* / national language

8 Previous load / national language  
Name / national language

9 Cleaning Procedures\* / national language  
Description\* / national language

10 Additional Services\* / national language

11 Contaminants / national language

12 Name cleaner\* / national language

13 Time in\* / national language  
Time Out / national language

14 Cleaning Station / national language  
Name / national language  
Address / national language

15 Driver\*\* / national language  
Name / national language  
Signature / national language

*The cleaning station and the driver confirm that the above services to clean the tank have been carried out (see EFTCO definition of 'clean').*



EFTCO CLEANING DOCUMENT: EEC 0000 0000 0708

# eECD

CleanCo1 NV  
Cleanco 1 - Antwerp  
Langelinderlaan 1  
Antwerp  
Belgium  
+32 35685601  
[www.cleanco1.be](http://www.cleanco1.be)

CUSTOMER REFERENCE: 1  
INTERNAL REFERENCE: 2

CUSTOMER: Bertschi AG  
Huttmattstrasse 22  
Duerrenäsch  
CH  
EQUIPMENT: Identification: TANKCONTAINER, BIDU 498109

NATURE OF PRODUCT: CHEMICAL  
NEXT LOAD

CO IMP	UN N°	PREVIOUS LOAD	NAME	CLE
1				C10,P52
2				C10,P52
3				C10,P52

ADDITIONAL SERVICES

CO IMP	NAME
1	hoses
2	hoses
3	hoses

NAME CLEANER: Nando

CLEANING STATION: Name: Signature

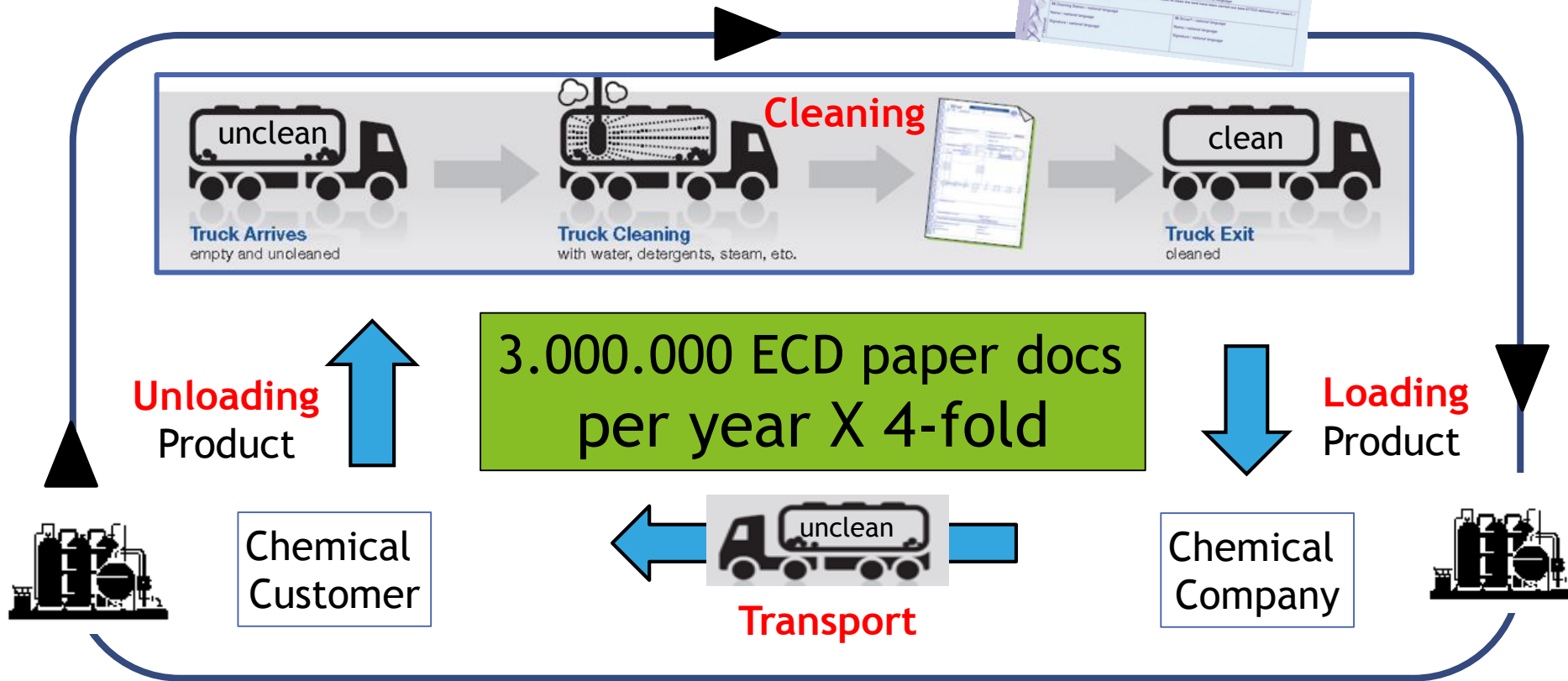
DATES: Date, Time In: 29-07-2011  
Date, Time Out: 13-09-2011

DRIVER: Name: Signature

# What is an ECD?

ECD = "EFTCO Cleaning Document"

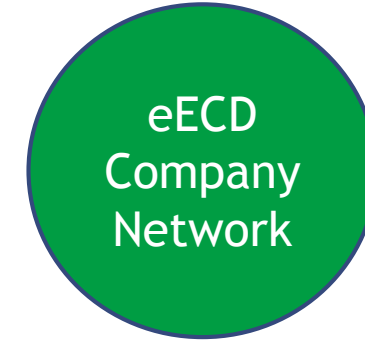
✓ is a support tank cleaning document on paper that contains data from different parties



# Digitalization of EFTCO Cleaning Document (eECD)



*Collective  
Intelligence*



## eECD VALUE

Compliance  
Quality

Safety  
Sustainability

Efficiency  
Cost

- ✓ No loss of documents
- ✓ Reduced waiting times
- ✓ Paper flow automation
- ✓ Sustainable way of working

- ✓ Uniform Workflows
- ✓ Supply Chain Visibility
- ✓ Accurate data sharing
- ✓ Pro-active planning

- ✓ Seamless collaboration
- ✓ Enhanced compliance
- ✓ Trusted Governance
- ✓ Save Time & Money



# Due to lack of a better alternative, paper makes us blind...

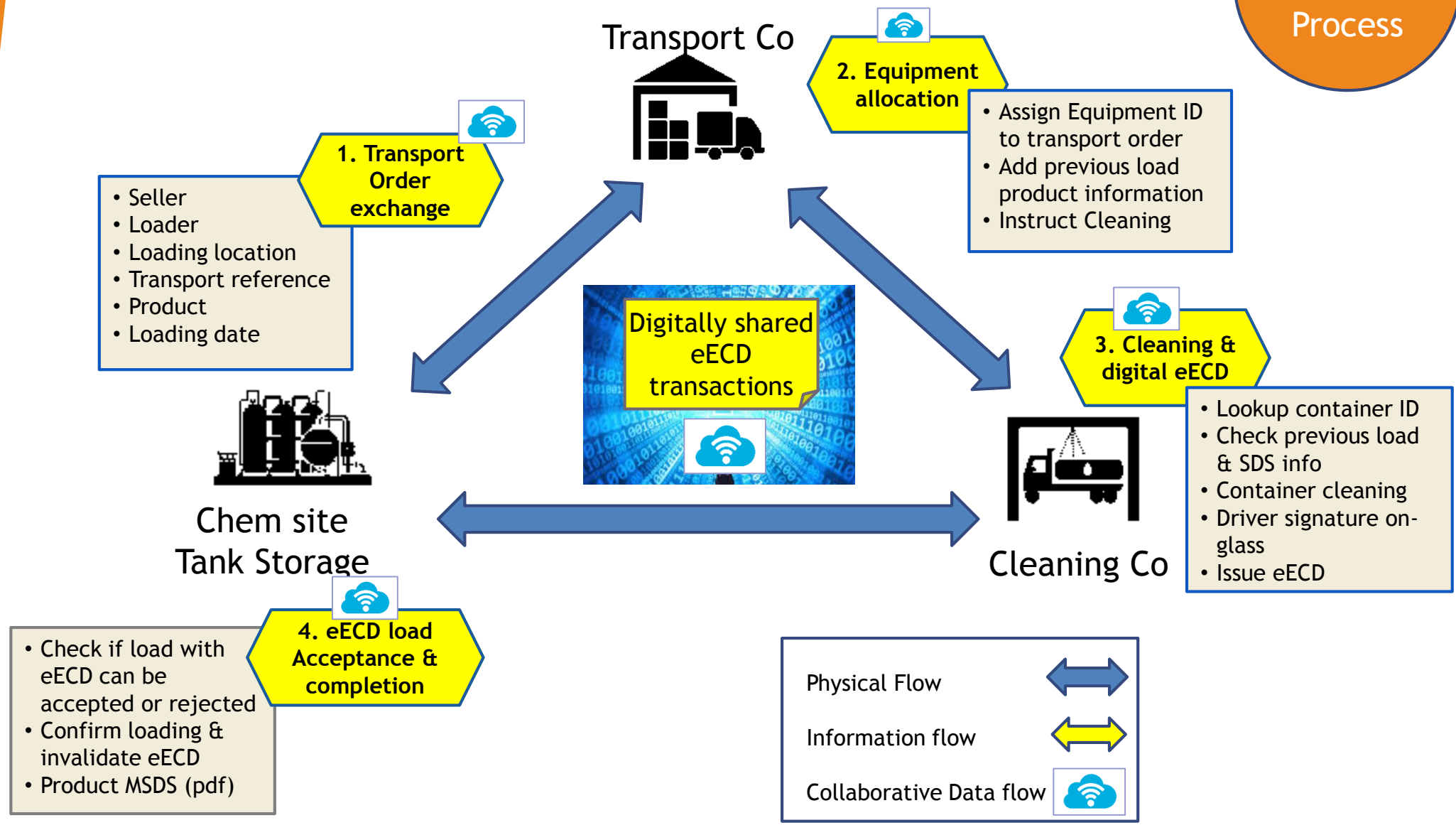
- ▶ Paper does not anticipate
- ▶ Paper creates waiting times
- ▶ Paper prevents automation
- ▶ Paper is slow
- ▶ Paper is fraude sensitive
- ▶ Paper asks for more Paper
- ▶ Paper prevents future digital supply chain collaboration



...and keeps us blind, due to today's fragmented digital solutions...

# How does the eECD process work?

Digital eECD Process





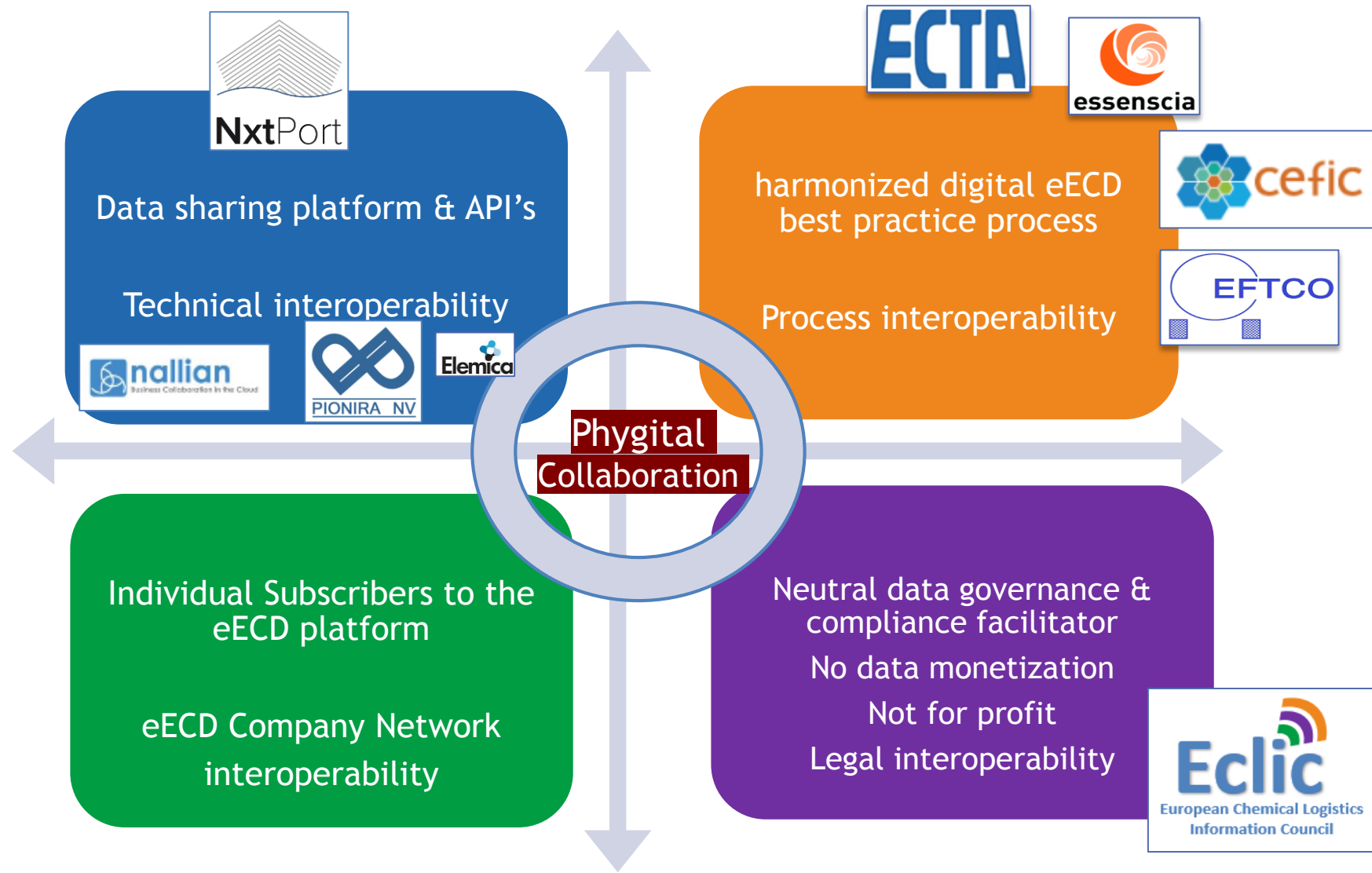
# The digital eECD: BENEFITS

- ▶ Reduced waiting times - Automated administration
- ▶ Enhanced compliance thru correct “previous load” info
- ▶ Improved customer quality - reduce cross-contaminations
- ▶ Safety data accuracy - Direct access on SDS info from the source
- ▶ “Real time” tank cleaning status before GATE entry
- ▶ Harmonized data chain - Automated “polymer cleaning guideline”

eECD ensures  
tankcontainers remain the  
safest and most cost  
effective way of transport



# Logistics Data Sharing: eECD Ecosystem



# Key Pillars of Trust - Data Sharing = Data security



NxtPort: Data custodian & platform

Data security  
& ISO  
certifications

Ethical  
hacking

leveraged  
CyberSecurity  
Network of  
experts

Data & IT  
cybersecurity  
audits

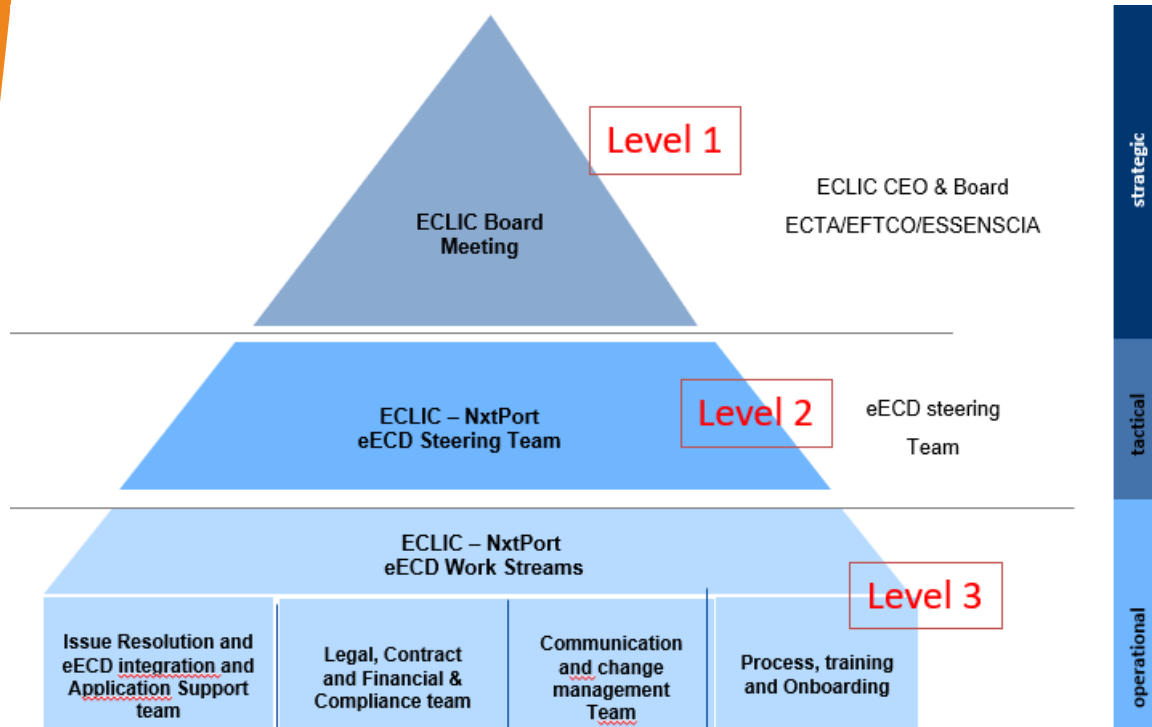




# Key Pillars of Trust - Governance & legal framework

ECLIC Governance model - **defines which data can be shared for each Use Case**

ECLIC Legal Framework - **Harmonized legal framework for all companies**



- ▶ eECD Subscriber Licence Agreement with NxtPort
- ▶ NxtPort General Terms & Conditions for ECLIC
- ▶ eECD API Specific User Terms - data sharing rules
- ▶ Support Service Level Agreement

ECLIC-  
NxtPort  
Agreement

NxtPort-  
Subscriber  
Agreement  
and terms

Open book  
financials

# How to connect with eECD application?

## Option 1 Web application



Double screen next to own  
IT system requiring double  
input

- ▶ Part of eECD licence
- ▶ Allows quick Start up
- ▶ API documentation

## Option 2 outsourced



- ▶ Check with your IT cleaning vendor
- ▶ LynX-Lucasoft + 2 German cleaning software vendors
- ▶ Costs with 3<sup>rd</sup> party vendor

## Option 3 API Integration



API connection to  
the eECD platform

B2B Direct connection with  
your IT system to the eECD  
platform and/or integration  
within your own IT system.

- ▶ Own IT integration & costs
- ▶ Central IT Support package available (800€/mday)

Each company  
decides how to  
integrate at  
their own level,  
speed, cost &  
interests

# How to subscribe and get eECD connected?



Gather info incl  
eECD subscription form  
[www.eclic.eu](http://www.eclic.eu)

Create your  
eECD admin account

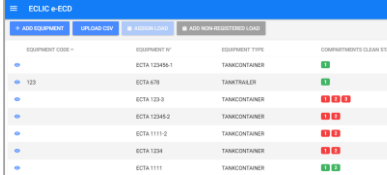
**Login for eECD**

Welcome back. Login to your account below.

Email address

Password

[Forgot your password?](#)



EQUIPMENT CODE	EQUIPMENT ID	EQUIPMENT TYPE	COMPARTMENTS CLEAN STATE
ECTA 123456-1	ECTA 123456-1	TANKCONTAINER	1
ECTA 678	ECTA 678	TANKTRAILER	1
ECTA 123-3	ECTA 123-3	TANKCONTAINER	1 1 1 1
ECTA 12345-2	ECTA 12345-2	TANKCONTAINER	1 1
ECTA 1111-2	ECTA 1111-2	TANKCONTAINER	1 1
ECTA 1234	ECTA 1234	TANKCONTAINER	1 1
ECTA 1111	ECTA 1111	TANKCONTAINER	1 1

Configure & prepare  
your organization

3-6 weeks

Submit your eECD  
registration form  
*email: [info@eclic.eu](mailto:info@eclic.eu)*



Pay your invoice  
to activate licence

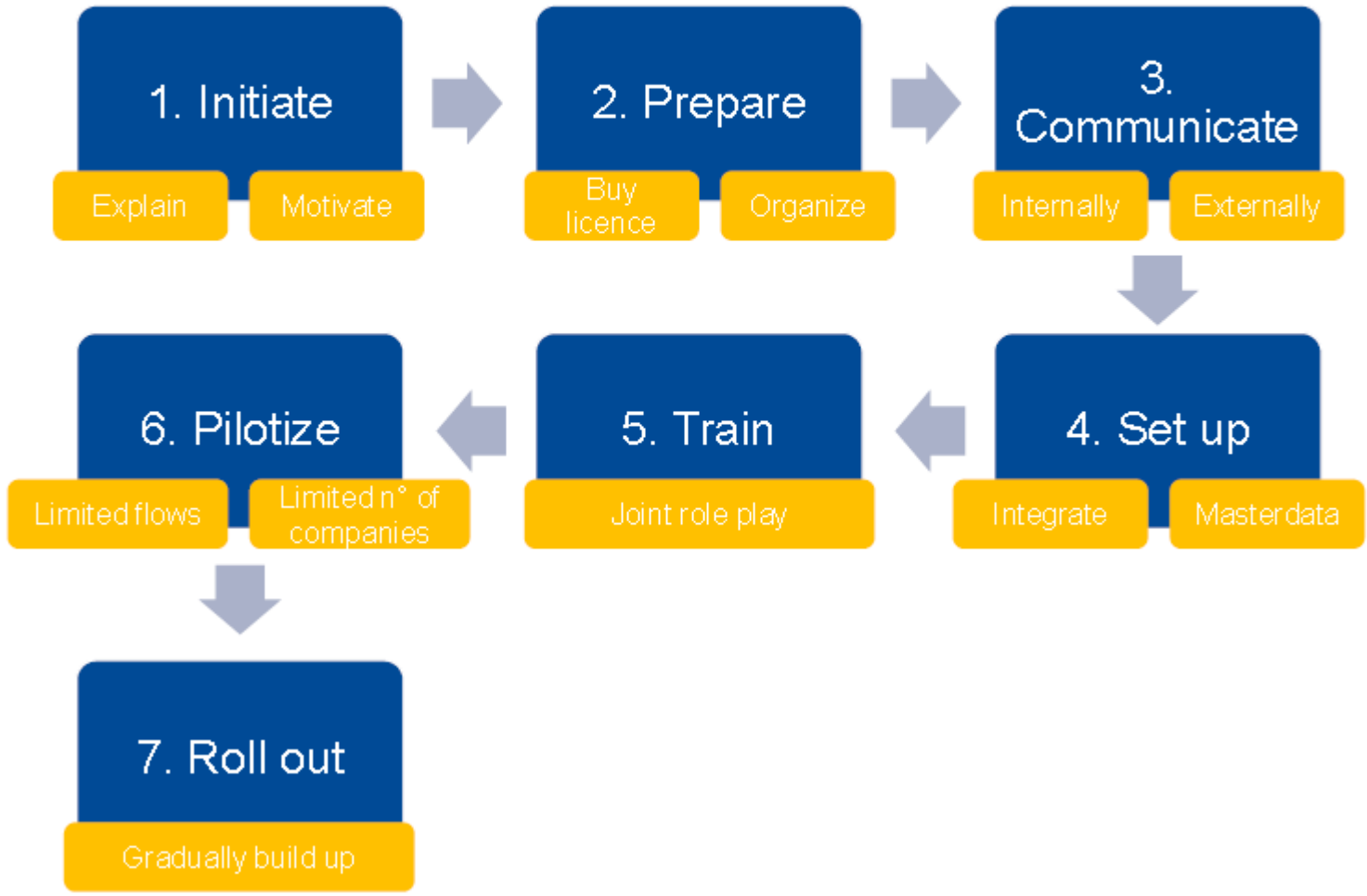
Work & Clean  
smart together





# 1. Project onboarding

Steps to onboard

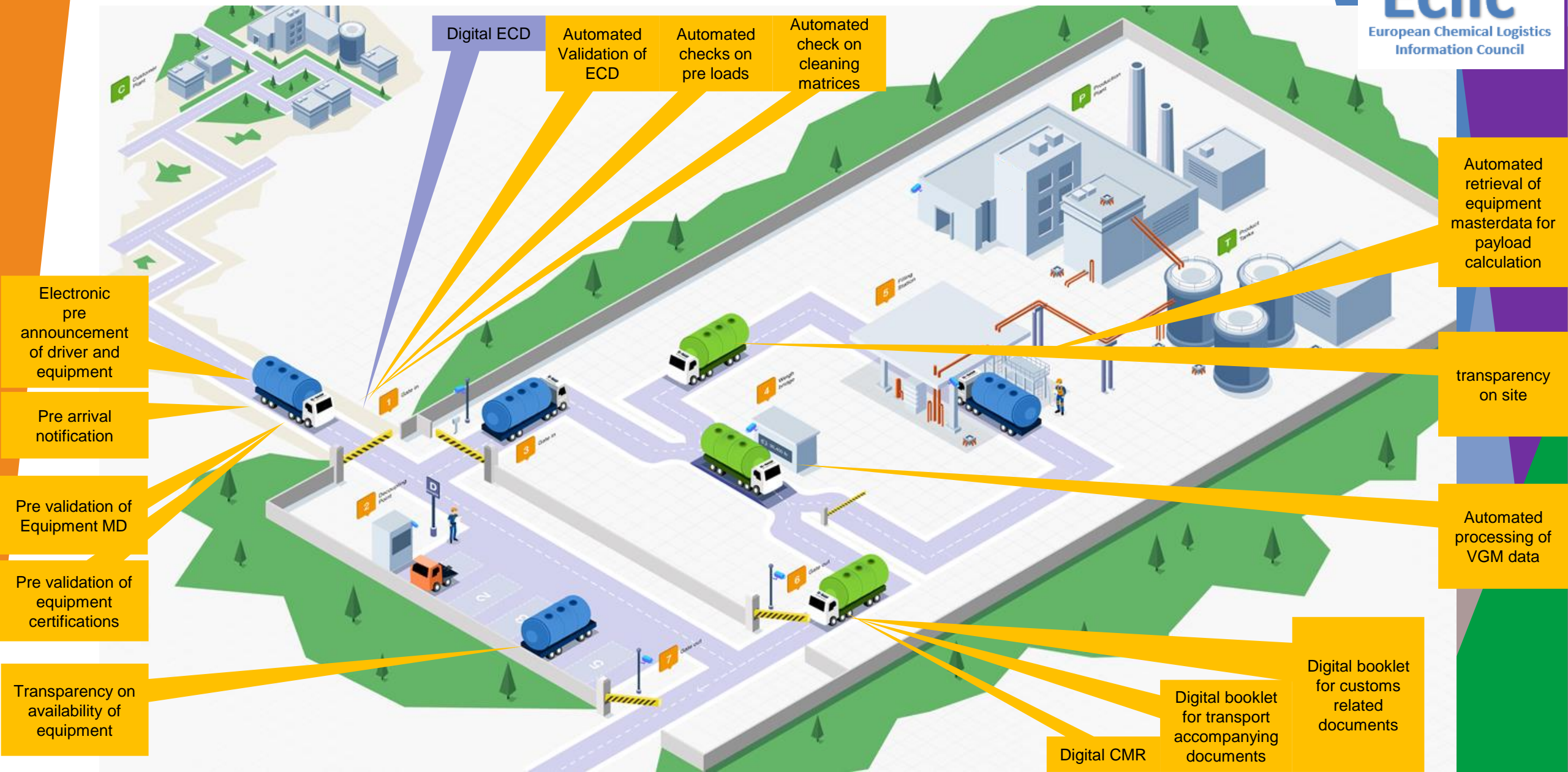


Transport Company Name
ADPO
Bertschi
De Decker Van Riet
GCA
Haesaerts
Hammer & Co
Hoyer
Kube&Kubenz
Rinnen
Schmidt
Transport Nagels
Vervaeke
VTG
Huktra (not Essers)
Van Opdorp & Zonen

Today's list of eECD subscribed transport Co's

# eECD 2020 process Future Use Cases

# Just a few examples of future eECD use case value!



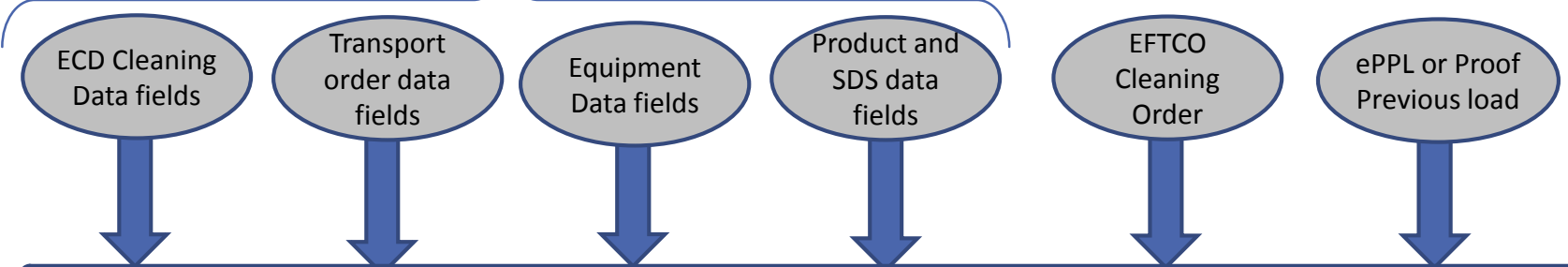


# ECLIC 2020 Use Case Roadmap

**ECLIC 2020 - Proof of Concepts**  
*ETA visibility - eCMR- Equipment pre-notifications*

**eECD Use Case 2020 (phase 2)**

**eECD Use Case (today in operation)**



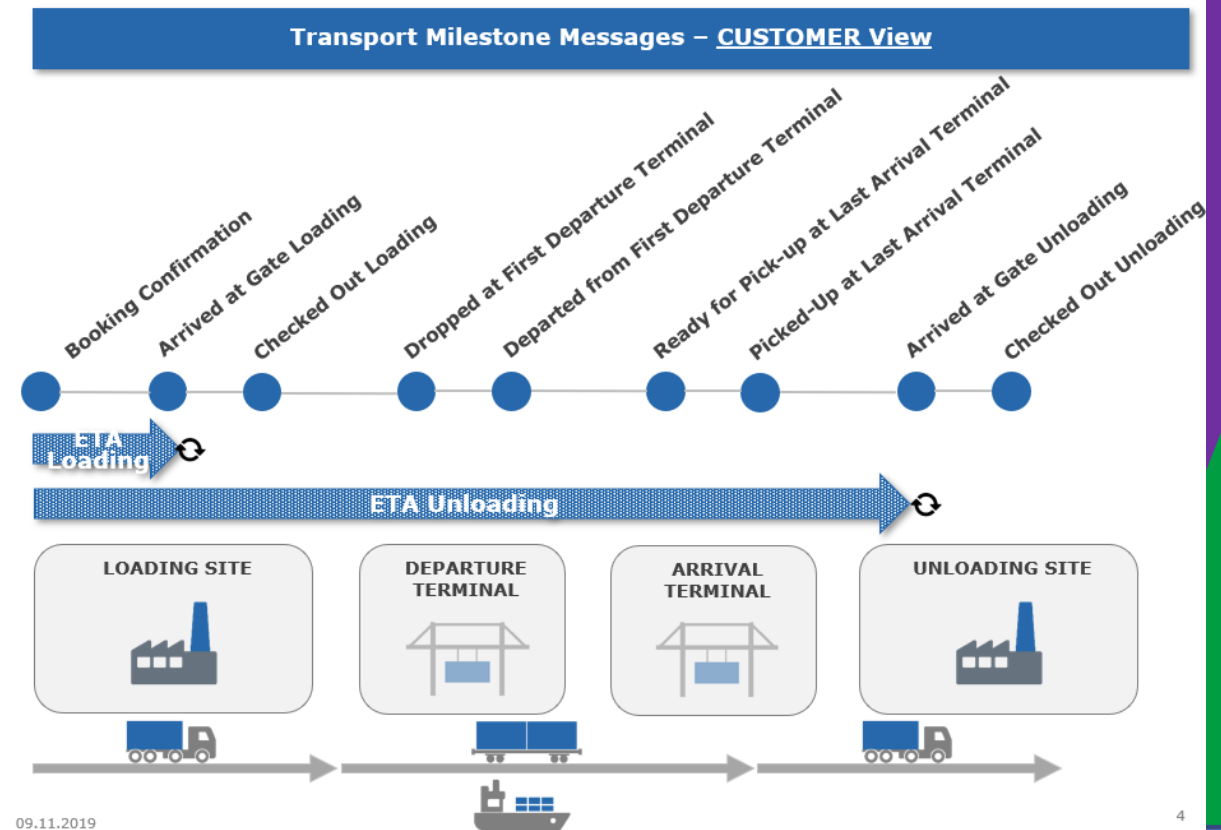
*agree to share a few more data fields through ECLIC to work smarter together*

**ECLIC – Uniform Chemical Logistics data highway**

# ECTA SC Visibility Workgroup

- ▶ Lead : Joep Aerts - Den Hartogh
  - ▶ Michelle Slobbe - Den Hartogh
  - ▶ Thies Grage - HOYER
  - ▶ Walti Cedric - Bertschi
  - ▶ Peter Viebig - Talke
  - ▶ Jochen Fink/Michael Mehlhorn - Rinnen
  - ▶ CAPEL Michel - GCA
  
- ▶ ECTA: Peter Devos
  
- ▶ Project Charter completed

## End-to-End Supply Chain Visibility



# ETA Proof of Concept 2020

## Share predictable ETA through ECLIC platform



Transport Co



Cleaning Co



Chem Co

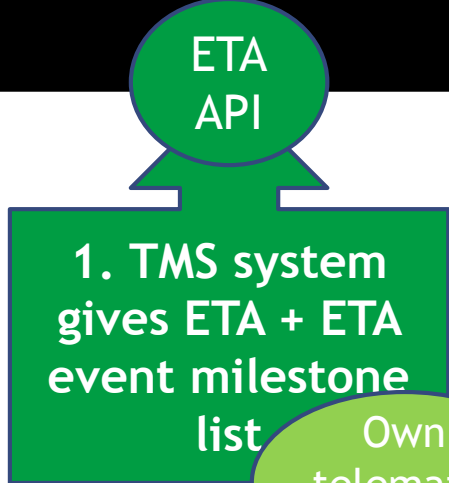
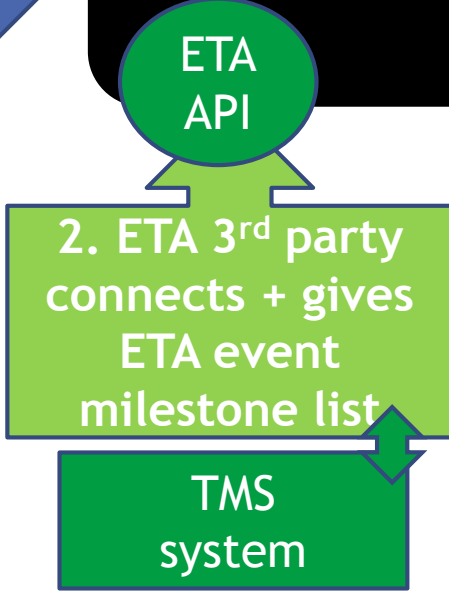


Customer

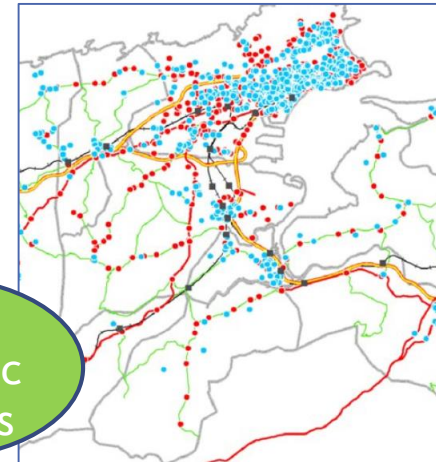
Elemica  
Transwide  
Others.....



“ETA event list” + info is pulled on a “as needed” basis



Own telematic solutions



ECLIC & associations fulfill a role to harmonize and facilitate best practices + respect of data ownership

Work smarter, safer, more transparent  
and paperless together



**CHOOSE YOUR RIGHT OPTION**



# eECD opens new digital doors and windows within the Chemical Logistics Supply Chain - Thanks to join the eECD network

Become  
Phygital to  
serve your  
customers  
better



[www.eclíc.eu](http://www.eclíc.eu)

To Subscribe  
Contact: [info@eclíc.eu](mailto:info@eclíc.eu)

Ineos Haulier Day

21 November 2019

Q&A

# Backup

# The eECD project, an industry association initiative, backed by its members

## Chemical Companies



## Transport & Logistics Companies



## Cleaning Associations



## Cleaning Companies

eECD is a first multi-company, cross-functional, transactional supply chain collaboration platform



# What Does it costs? eECD tariff table: ECLIC board July 2, 2018

eECD Tariff Table	ECD pack size	START-UP FEE (ECD licence + ECD pack 0,20)	Annual licence fee	price per ECD pack as of year2,3,...n	connection cost
Company types & sizes					
Company size defined based upon annual # of paper ECD's per Year	<b>sold per pack</b>	<b>YEAR1</b>	<b>YEAR 2,3,...n</b>	<b>20 cents per eECD</b>	
<b>Transport Co - EquipmentOperator</b>					
SMALL <=2500	1500	1200	900	300	web included
MEDIUM >2500 and <=15000	7500	3900	2400	1500	own cost
LARGE >15000 <30000	18000	7200	3600	3600	own cost
XL >30000	35000	11800	4800	7000	own cost
<b>Cleaning Co-Cleaner</b>					
SMALL <=2500	1500	600	300	300	web included
MEDIUM >2500 and <=15000	7500	1950	450	1500	own cost
LARGE >15000 <30000	18000	4500	900	3600	own cost
XL >30000	35000	8200	1200	7000	own cost
<b>Chemical Co - Seller-Loader</b>					
SMALL <=2500	1500	3300	3000	300	web included
MEDIUM >2500 and <=15000	7500	8100	6600	1500	own cost
LARGE >15000 <30000	18000	11600	8000	3600	own cost
XL >30000	35000	16800	9800	7000	own cost
<b>Tank Storage Operator Co's</b>					
SMALL <=2500	1500	1200	900	300	web included
MEDIUM >2500 and <=15000	7500	3900	2400	1500	own cost
LARGE >15000 <30000	18000	7200	3600	3600	own cost
XL >30000	35000	11800	4800	7000	own cost

# eECD Company subscriptions

Connect to your partners in the growing eECD network....

<https://www.eclic.eu/usecase.php#uc7>

Individual Subscribers to the eECD platform

eECD Company Network interoperability

**eECD company network**

Find below the list of companies who already subscribed to the digital eECD process and are preparing their teams, per specific loading or cleaning location, to use the digital eECD within the next 2 months. This list is updated on a regular basis and the purpose is to let the eECD network grow so that companies can find & contact each other within this network and build up the digital eECD experience together. Do you have any further eECD company network question? Please contact [info@eclic.eu](mailto:info@eclic.eu).

Search Company Name...

Search Licence Type...

Company Name	Licence Type	Country	Location	Licence Holder	Admin User
Covestro NV	Seller-Loader	Belgium	Scheldelaan 420 - Haven 507 - 2040 Antwerp	Lieven De Jonge	Peggy Janssens
Cotac Europe GmbH	Cleaner	Belgium	Transcontinentaalweg 10-12 - Haven 200 - 2030 Antwerp	Erwig Seliaerts	Erwig Seliaerts
Cotac Nederland BV	Cleaner	Netherlands	Oude Maasweg 44-50 NL-3197 KJ Botlek (Rotterdam)	Erwig Seliaerts	Tako Runia, Perry Klopstra
Haesaerts Intermodal NV	Equipment Operator	Belgium	Keetberglaan - Haven 1054 - 2070 Zwijndrecht	Luc Haesaerts	Rudy Aerts
Evonik NV	Seller-Loader, Equipment Operator	Belgium/Germany	Tijsmanstunnel West 2040 Antwerp	Bart Witdouck	Tim Mertens

- eECD Use Case
- What is an ECD?
- Project Objective
- eECD benefits
- Our supporting companies
- The project timeline
- Who can use eECD?
- eECD intro and on boarding movies
- eECD company network