

# Container slides off the chassis

NON – INEOS accident

Logistics SHE Alerts



## what

On March 26th, 2020, a serious accident happened.

During unloading of the container, the driver failed to close the rear twist locks, which allowed the container to slide off the chassis, the container damaged the facade structure of the silo system.

High costs to evacuate the product and remove the damaged equipment.

The container and the chassis suffered a total loss. 20t of the product were contaminated.

Fortunately, no persons have been injured.

## why

The result of the investigation was a mistake of the driver.

The driver failed to lock the rear twist locks.

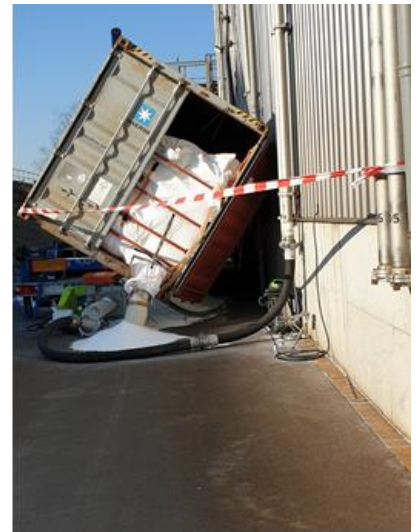
## learning

Twist locks are locks, which connect the container and the chassis to each other. The twist locks are inserted into the corner fittings of the containers.

**The twist lock has to be turned 90° to create a connection.**

**The twist lock has to be checked for proper locking before each departure and before tipping of the container. This must be done on each twist lock individually.**

**In addition, the locking of the twist locks must also be checked by using of the so-called „warning flags“ before departure, via the rear view mirrors!**



Opened!  
No departure!



Locked!



26

03

20