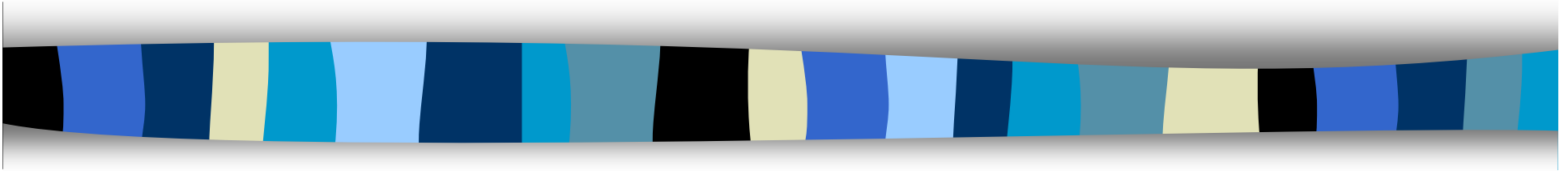


Fall from Tanker



What can we learn?



What Happened?

- 5th February 2009
- Operator loading bio-diesel
- New loading facility
- Removed loading arm
- Walked along short walkway attached to tanker to return loading arm to end point
- Walked straight off the end of short walkway

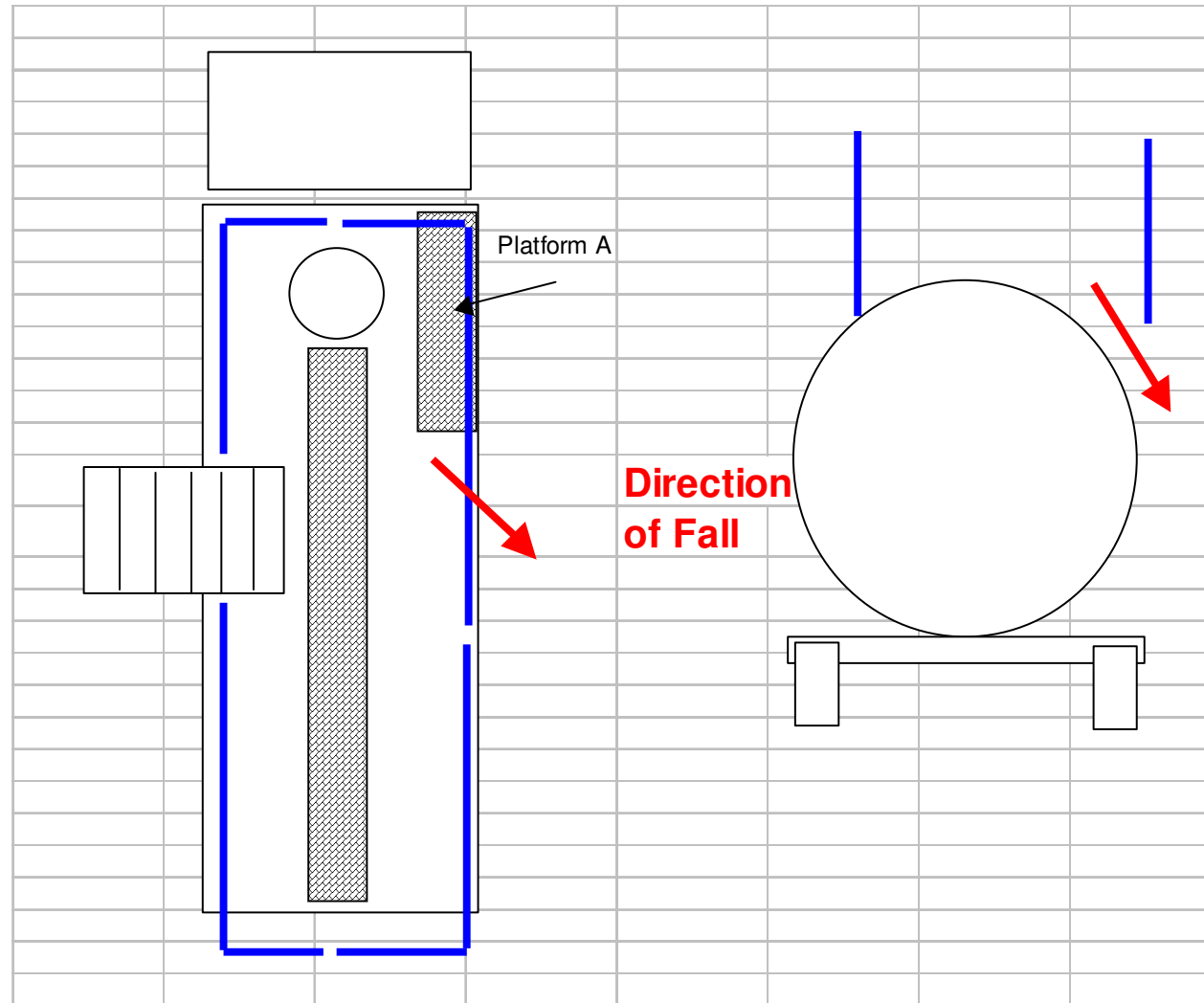


What Happened?

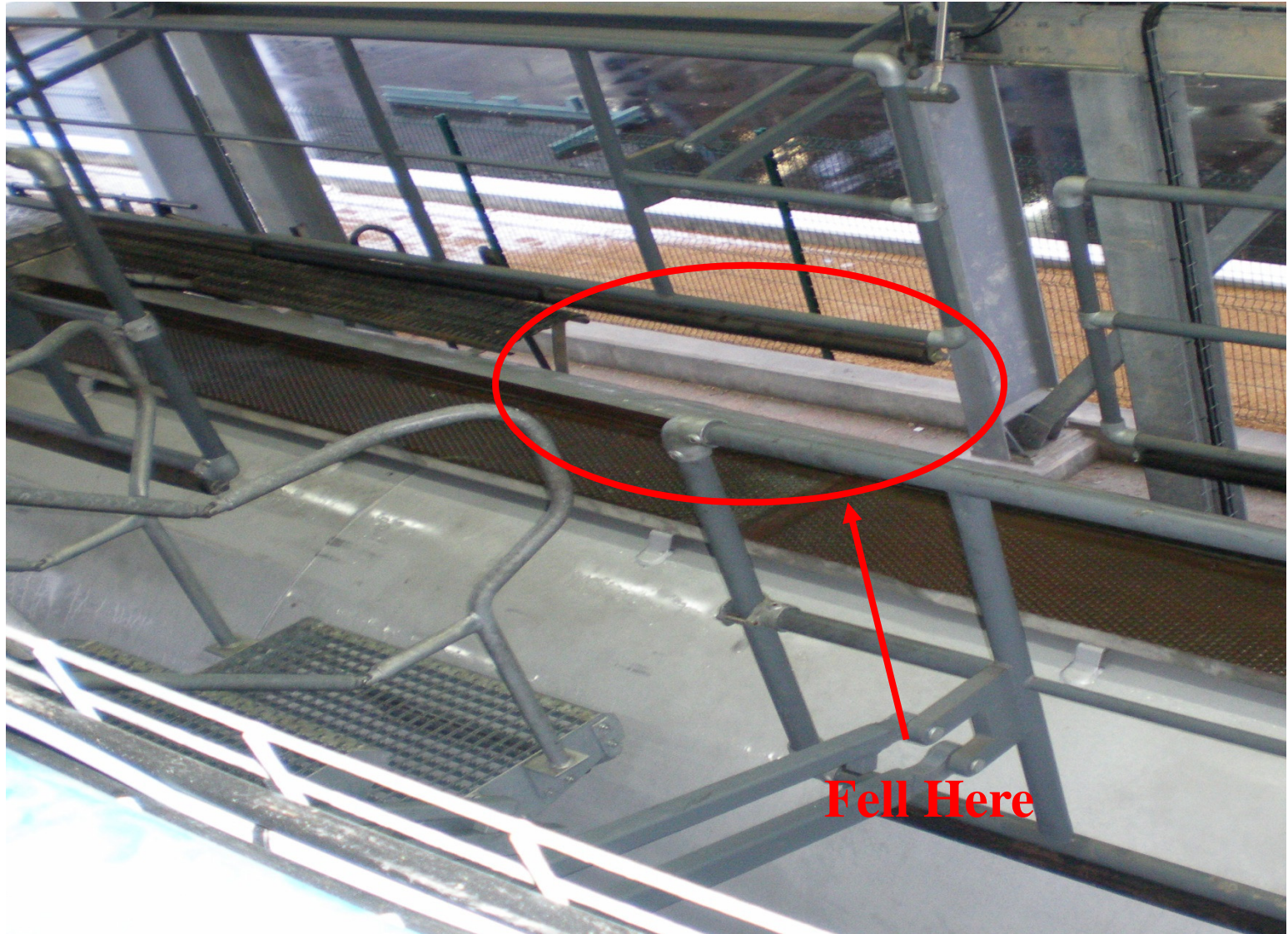
- Fell between bottom of adjustable barrier system and side of the tanker
- Fell ~ 3m to the floor
- Broke his wrist

This could easily have been a fatality !

What Happened?



What Happened?





What Happened?

- Play video clip now

Tanker fall video.mpg



Why Did it Happen?

- The barrier system did not fully protect this specific type of tanker
- This type of tanker is unusual
- The loader was not aware he was reaching the edge of the walkway



Lessons?

- Designing gantry or barrier systems for loading a range of tanker types is not easy!
- Commissioning of such systems needs to check against the full range of tankers to be loaded
- Loading teams need to check every single time that it is safe to load
 - Does barrier system provide protection for this type of tanker?
 - Is the tanker correctly positioned?
 - If not – don't load the tanker – turn it away!



What should you check at your site?

- Take a fresh look at any tanker loading or unloading operations you have
- Are they suitably protected from falls from height?
- Do you know your protection system will work with all types of tanker received at your Site?
- Would your team recognise the risk and be prepared to turn away a tanker if it was not safe to work on?